



your CHARLOTTE visit

CATCH THE 2003 NFC CHAMPION **CAROLINA PANTHERS** AS THEY COMPETE IN THEIR 11TH NFL SEASON IN 2005-06 HOPING TO RETURN TO THE PROMINENCE THAT LED THEM TO SUPER BOWL XXXVIII. HOME GAMES INCLUDE BATTLES WITH NFC SOUTH RIVALS AND SUPER BOWL CHAMPS THE NEW ENGLAND PATRIOTS. (704) 358-7800

WHERE ARE CHARLOTTE'S HOTELS LOCATED?

Charlotte's landscape is ever changing, and with the growth of the city, finding comfort in accommodations gets easier by the day. Whether looking for the luxuries of a full-service hotel or resort, the dependable comfort of your favorite hotel chain or the quaint charm of a bed & breakfast or historic inn, you can find it in Charlotte. With more than 30,000 hotel rooms in the area, including 4,100 within walking distance of the Charlotte Convention Center, Charlotte has what you are looking for.

Accommodation choices are endless. Charlotte offers a range of comforts from hotel chains conveniently located along interstate exits, to bed & breakfasts nestled along tree-lined streets and neighborhoods. From high-rise corporate apartments to luxury suites and extended stays, all speak to Charlotte's ability to provide a visit of regal distinction.



UNIQUE TO CHARLOTTE

With the excitement of a cosmopolitan city and the ease of Southern charm, Charlotte presents a unique atmosphere where big city style meets down-home appeal. Other cities may boast must-see attractions, but Charlotte offers things to see and do unlike any destination in the country.





One of the top hands-on science museums in the nation, Discovery Place provides ever-changing, entertaining facilities that foster experiences in areas that range from life science to space exploration. More than a half-million people from all over the United States visit Discovery Place, its IMAX Dome Theatre and the Charlotte Nature Museum each year. Discovery Place has been selected by the Israel Antiquities Authority in Jerusalem to develop and present a major new exhibition featuring the Dead Sea Scrolls in the spring of 2006.

Experience Charlotte's newest educational facility, *ImaginOn*. Colorful, whimsical and unexpected. *ImaginOn: The Joe & Joan Martin Center*: a partnership and joint use facility of The Public Library of Charlotte & Mecklenburg County and Children's Theatre of Charlotte, is no doubt going to be an integral part of the city's burgeoning cultural district. Reflecting an original approach to education, learning and the arts, *ImaginOn* will be an unprecedented resource for the community and for Charlotte visitors by creating an inspired marriage of form and function offering an educational playground for young and old.

The NC Blumenthal Performing Arts Center is a state-of-the-art, multi-use performing arts center that yearly hosts the Broadway Lights Series, featuring national touring Broadway productions and a wide range of special attractions.

Boasting an impressive roster of professional sports teams along with the best and most varied recreational facilities available, Charlotte is a national sports center and a sports enthusiast's dream.



THE NASCAR NEXTEL ALL-STAR CHALLENGE

HAS EVOLVED FROM A NOVELTY TO A SHOWCASE, A SPRING RITUAL OF SPEED AND DARING RESULTING IN YEARLY ADDITIONS TO THE BOOK OF NASCAR LORE. CATCH THE EXCITEMENT AT LOWE'S MOTOR SPEEDWAY AS MOTORSPORTS HISTORY IS WRITTEN AT OVER 180 MPH EACH MAY. (800) 455-FANS



Dead Sea Scrolls, Discovery Place

MOVING AROUND

Navigating through Center City Charlotte is easy due in part to a grid pattern of city blocks. Tryon Street serves as the main thoroughfare in Center City intersecting with Trade Street at the Square. Blocks increase by 100 in each direction from this intersection.

Hop aboard CATS when you get tired of walking around. Charlotte currently operates the largest transit system between Washington, D.C., and Atlanta, GA. (CATS) The Charlotte Area Transportation System operates a citywide bus service, a Center City motorized trolley line, the Gold Rush, and the Historic Charlotte Trolley, an electric trolley line running from Atherton Mill in historic South End to Ninth Street in the heart of Center City's entertainment district.

Turn to the Transportation section on page 50 for a more in depth view at Charlotte's public transportation.



TAKE A TOUR

From the Center City core to the outlying neighborhoods, Charlotte is a city of intriguing diversity... there's history and high-technology... financial prominence and sports enthusiasm... scientific wonder and a thriving cultural scene – all within walking distance.

The 21st largest city in the United States, Charlotte is the largest trading center in the southeast and second largest financial center in the United States and the center of the nation's fifth largest urban region. Charlotte's key attractions include Paramount's Carowinds Theme and Water Park, Discovery Place science center and IMAX Dome Theatre and the NC Blumenthal Performing Arts Center.

Charlotte is a sports enthusiast's dream! World-class professional sporting events are held in Charlotte throughout the year, many of which call Charlotte home.

Visitors can experience Charlotte's Center City by riding the Gold Rush rubber-wheeled trolley service, or ride the rails and take a relaxing guided tour of Charlotte when you climb aboard Streetcar # 85 – an electric streetcar built in the Queen City in 1927. During this two-mile jaunt through Historic South End and the Center City, hear about Charlotte's rise as an industrial and financial center and note the many historic landmarks along the route.



THE BEST OF HOLLYWOOD ENTERTAINMENT. NOW PLAYING. **PARAMOUNT'S CAROWINDS** OFFERS GUESTS MORE THAN 105 ACTION-PACKED ACRES FEATURING MORE THAN 60 WORLD-CLASS RIDES, SHOWS AND HOLLYWOOD-THEMED ATTRACTIONS FOR ALL AGES INCLUDING ROLLER COASTERS, WATER RIDES, A 16-ACRE WATER PARK – BOOMERANG – AND THE NEW NICKELODEON CENTRAL KID'S AREA. (704) 588-2600



Hop off to enjoy antique shopping and fine dining. The trolley showcases Charlotte's growing, diverse community and introduces many to smart city planning and transit. Charlotte's vintage trolleys animate the city center, connecting thriving urban neighborhoods with business and entertainment, creating a moving, changing classroom for exploring science, technology and the story of Charlotte's past and future.

SIGHTSEEING & WALKING TOURS

CHARLOTTE SELF-GUIDED CENTER CITY WALKING TOUR BROCHURE

Pick your copy up at Visit Charlotte at Main Street – The Visitor & Relocation Center. Guided walking tours available on Fridays at 10:00 am and 1:00 pm.

ARTS & SCIENCE COUNCIL WALKING TOUR

Map available at www.artsandscience.org

CHARLOTTE DAILY CITY TOUR

Guided motorized climate controlled Center City tour; 704-566-0104; www.queencitytours.com

CHARLOTTE HISTORY WALK/VICTORIAN HOME WALKING TOUR

Guided walking tour through Charlotte's past; 704-565-6858; www.stepbacktours.com

HISTORIC FOURTH WARD WALKING TOUR

Map available at www.charlottecentercity.org

For more information, call Visit Charlotte at Main Street at 704-331-2700 or 1-800-231-4636

WHERE IS CHARLOTTE?

The Charlotte region is composed of 16 counties, including two counties in South Carolina, with the city of Charlotte serving as the hub. Located in the heart of the Southeast, Charlotte lies within the southern Piedmont of North Carolina along the state's border with South Carolina. Charlotte is the largest and most accessible city between Washington, D.C. and Dallas, TX.

Owing to its mid-Atlantic location, getting to Charlotte is easy from anywhere in the country or world, garnering its nickname the "International Gateway to the South." More than 55 percent of the country's population lives within a two hour flight of Charlotte and 6 million people live within a 100-mile radius.

Charlotte/Douglas International Airport, the national hub of US Airways, carries on average more than 500 flights a day and has more flights per capita than any other airport in the nation. Charlotte offers drivers convenient access to the Queen City by way of its highly efficient and growing interstate highway system. I-77 and I-85 connect Charlotte to cities in the Northeast, Southwest and Midwest. Convenient I-40, less than one hour north, provides an important east/west link with coast-to-coast access.



TAKE A TOUR OF CHARLOTTE'S PUBLIC ARTWORKS. THE **ARTS & SCIENCE COUNCIL OF CHARLOTTE** VIEWS PUBLIC ART AS INTEGRAL TO A COMMUNITY'S FABRIC BY RECOGNIZING THE POTENTIAL OF ART TO CREATE LIVABLE CITIES AND ENRICH THE SPIRIT AND PRIDE OF ITS CITIZENS. VISIT WWW.ARTSANDSCIENCE.ORG FOR A PRINTABLE GUIDE TO CENTER CITY'S PUBLIC ARTWORKS OR STOP INTO VISIT CHARLOTTE AT MAIN STREET. (704) 331-2700





EXPERIENCE THE BEST OF BROADWAY MUSICALS WITH THE **NC BLUMENTHAL PERFORMING ARTS CENTER'S BROADWAY LIGHTS SERIES**. THE 2005-2006 SEASON INCLUDES SUCH SMASH HITS AS *LITTLE SHOP OF HORRORS*, *CHICAGO* AND *THE RADIO CITY CHRISTMAS SPECTACULAR*. (704) 372-1000

FLY TO CHARLOTTE

Charlotte/Douglas International Airport (CLT) averages more daily flights per capita than any other airport in the nation.

Charlotte/Douglas provides non-stop service to 124 destinations worldwide via 635 daily flights to more than 25.5 million passengers annually. Charlotte is a national hub, with service provided by eight major domestic airlines, two foreign flag carriers, including Lufthansa, and seven regional carriers. The airport ranks 16th nationwide in operations and 19th nationwide in total passengers. International travel is easy with daily non-stop flights to 28 international destinations, including London, Mexico City and Munich, Germany.

CLT has approximately 20,400 parking spaces along with staging and parking for buses, taxis and limousines. Shuttle and taxi service, public transit service, and courtesy vehicle pick up for motels, hotels and rental cars are available.

Charlotte/Douglas International Airport

5501 Josh Birmingham Parkway
Charlotte, NC 28208
(704) 359-4801 • Fax: (704) 359-4030
www.charlotteairport.com



PUBLIC TRANSPORTATION

Charlotte currently operates the largest transit system between Washington, D.C., and Atlanta, GA.

CATS (Charlotte Area Transportation System) is managed by the Public Transit Department of the City of Charlotte, providing public transportation services throughout Mecklenburg and surrounding counties. CATS bus line currently operates more than 40 routes county wide, and transports more than 12 million passengers a year. The Gold Rush is one of many shuttle services provided by CATS throughout the city. It operates three circulating lines in Center City.

The Historic Charlotte Trolley, operated by CATS, runs seven days a week from Atherton Mill in the historic South End neighborhood to Ninth Street in the heart of the Center City's entertainment district.

Charlotte Area Transit System

(704) 336-RIDE
www.charneck.org/Departments/CATS

Charlotte Trolley

(704) 375-0850
www.charlottetrolley.org



TRAINS/RAILROAD

Amtrak provides daily passenger rail service to the north and south, with connections to the east/west lines accessing most of the United States, as well as its Piedmont train to Raleigh and Carolinian train to New York.

Amtrak

1914 North Tryon St.
Charlotte, NC 28206
1-800-USA-RAIL

EXPLORE THE NEIGHBORHOODS

Some of Charlotte's most interesting neighborhoods began development in the late 1800s. Dilworth, Elizabeth, Myers Park, Plaza Midwood and South End are part of Charlotte's original landscape. These neighborhoods have retained and preserved their true character probably more than any to be found in the city. The lovingly restored sidewalk neighborhoods feature large trees, front porches, with funky shops and restaurants.

Charlotte's neighborhoods add a unique dimension to the city and range from upscale elegance to

rejuvenated artisan communities. A wealth of cultural possibilities, dining, shopping, and entertainment can be found in these neighborhoods. For the visitor looking to venture beyond Center City, Charlotte's neighborhoods are well worth exploring.

Spend some time exploring Charlotte's diverse neighborhoods including: Center City, Plaza Midwood, Dilworth, Elizabeth, Myers Park, South End, NoDa, South Park, Ballantyne, and Fourth Ward.

ANSWERS TO YOUR QUESTIONS

Help is a phone call or web link away. Whether you prefer seeking expert advice with a friendly voice over the phone or to do your own research on the web, Charlotte has the resources you're looking for. Call 1-800-231-4636 or visit www.visitcharlotte.com.

Want to know how to receive discounts, special offers and other great deals?

Where can you attend the next one-of-a-kind exhibit at one of Charlotte's many nationally-renowned museums?

Which historic neighborhood will host the next gallery crawl?

Charlotte's call center is staffed with dedicated and knowledgeable people who can help you with up-to-date information. If you prefer to search for information yourself, log on to visitcharlotte.com, featuring a wealth of comprehensive information on the Charlotte calendar of events. Take advantage of Charlotte's special offers section offering packages to excellent restaurants, hotels, and attractions in the area.



NODA, CHARLOTTE'S FRINGE ART NEIGHBORHOOD, HOSTS A FREE GALLERY CRAWL EVERY 1ST AND 3RD FRIDAY OF THE MONTH. BROWSE THE AREA'S SWANKY GALLERIES, ENJOY A BITE TO EAT AND RELAX TO SMOOTH MUSIC PLAYED BY LOCAL STREET MUSICIANS. WWW.NODA.ORG





THE MINT MUSEUM OF CRAFT + DESIGN

FEATURES A PERMANENT COLLECTION THAT DOCUMENTS CONTEMPORARY STUDIO CRAFT, TRACING THE MOVEMENT'S HISTORICAL ROOTS IN THE 19TH CENTURY AND ITS RELATIONSHIP TO TRADITIONAL DECORATIVE ARTS AND INDUSTRIAL DESIGN. THE TECHNIQUES AND INSPIRATION OF ARTISTS THROUGHOUT THE WORLD ARE SHOWCASED IN COLLECTIONS OF CERAMICS, FIBER, GLASS, METAL AND WOOD. (704) 337-2000

MAIN AREAS OF CHARLOTTE

Charlotte is truly a dynamic city. Walk along the bustling streets of Center City Charlotte, step aboard the historic Charlotte Trolley or stroll along the tree-lined streets of our neighborhoods and experience the warmth and southern hospitality visitors to the Queen City have come to know.

Center City comprises the key business, cultural and entertainment district of Charlotte. Historic neighborhoods South End, NoDa, Dilworth, Myers Park and Plaza Midwood offer a glimpse into the city's past and offer new, eclectic options for dining and entertainment.

South Park, Charlotte's original upscale shopping destination, SouthPark Mall, and neighboring Phillips Place have been touted "One of the Four Best Places in the South for Luxury Shopping," not to mention living and entertainment. Ballantyne, a pre-planned community further south, offers a perfect mix of dining, entertainment, and the five-star Ballantyne Golf Resort & Spa.

Just a short drive from Charlotte, Historic Waxhaw, Pineville and the Metrolina Expo offer shoppers a wealth of antiques and home furnishings.

The suburban Birkdale Village to the north – is dotted with clothing stores for men, women and children while on the waters of two major man-made lakes within 20 minutes of Charlotte – Lake Norman to the north and Lake Wylie to the south – excellent water recreation, including fishing, boating and swimming abounds.



Fans of NASCAR find Charlotte a dream. Ninety percent of all NASCAR NEXTEL teams are headquartered within 50 miles of Charlotte, several of which offer gift shops and retail stores.

WORLD CLASS CHARLOTTE

Recognized as a leading cultural capital, Charlotte continues to build on its reputation as a world class city through arts, science and historical attractions drawing nearly 2.9 million people in attendance annually.

Charlotte's culturally-enriched tapestry is a distinction that beckons visitors to return to the city year after year.

Vibrant and robust, the cultural scene and innovative museums of Charlotte offer limitless possibilities as diverse as its people and lifestyles. Our museums and cultural attractions

Come, Experience Art



Mint Museum of Craft + Design
220 N. Tryon Street, Charlotte

Mint Museum of Art
2730 Randolph Road, Charlotte

704-337-2000
www.mintmuseum.org

ARTS &
SCIENCE
COUNCIL
Advancing Arts, Science & History

Preston Singletary, *Wolf Hat*



The Mint Museums
Experience Art

are among the finest in the country and are certain to please a wide variety of interests from fine art to hands-on-science exhibits, from historical sites to renowned botanical gardens.

Charlotte has experienced both a renaissance and rejuvenation and its vibrant spirit can be seen throughout the city. Boasting an eclectic array of dining and nightlife, Charlotte's unique entertainment and feasting options create a real sense of character.

Charlotte's dining experiences are paralleled by few other destinations. In the central business district you'll find an exciting mix of fine restaurants, cafés and eateries are only a short stroll from any point in the Center City.



PUBLIC ART IS A REFLECTION OF OUR COMMUNITY'S HISTORY AND IDENTITY. COMMUNITY IS MORE THAN THE PHYSICAL ENVIRONMENT WE INHABIT. IT INCLUDES THE PEOPLE AND OBJECTS WE INTERACT WITH ON A DAILY BASIS. PUBLIC ART STRENGTHENS ECONOMIC DEVELOPMENT AND TOURISM.

CASCADÉ; CARILLON BUILDING, 227 W. TRADE STREET;
ARTIST: JEAN TINGUELY (1991) THE PUBLIC ART PROGRAM IS
ADMINISTERED BY THE ARTS & SCIENCE COUNCIL.
WWW.ARTSANDSCIENCE.ORG

Johnson & Wales University, the world's largest foodservice educator brought a new level of culinary strength to Charlotte in 2004. Students living and working in the area bring their flair for flavor to the Queen City.

Charlotte has style. From the top names in manufacturer and retail outlets, to upscale boutiques and unique shops nestled in neighborhood shopping centers, from destination megamalls, to antique villages, art galleries and outdoor markets, Charlotte offers a truly unique shopping experience with a wide range of retail options.

Carolina blue skies and fantastic facilities put Charlotte on top of the list for sports fans and those in need of a little recreational fun. From the excellent parks throughout the county to more than 50 beautiful golf courses, Charlotte's climate is conducive to sports and recreation year round. Boasting an impressive roster of professional sports teams along with the best and most varied recreational facilities available, Charlotte is a national sports center and a sports enthusiast's dream!



NATIONALLY-ACCLAIMED CONDUCTORS CHRISTOF PERICK AND ALBERT-GEORGE SCHRAM LEAD THE **CHARLOTTE SYMPHONY ORCHESTRA** IN ITS POPULAR CLASSICS AND POPS SERIES. THE POPS SERIES ALLOWS THE CHARLOTTE SYMPHONY TO PLAY WITH SPECIAL GUESTS SUCH AS THE TEMPTATIONS AND BERT BACHARACH. (704) 972-2000



ARTFULLY CHARLOTTE

Charlotte is home to Charlotte Shout, a month-long celebration of art, culture and community, incorporating more than 200 performances and events in more than 40 venues throughout the Charlotte region. During the month of September each year, Charlotte Shout enhances the arts, cultural, and entertainment opportunities in Charlotte by creating an inclusive arts experience through a range of coordinated festival events.

Immerse yourself in the local Charlotte culture by experiencing some of the country's most touted art museums and galleries. The Mint Museum of Art and Mint Museum of Craft + Design feature ever-changing exhibits of some of the world's finest collections. The McColl Center for Visual Art is committed to enhancing and promoting visual arts in the southeastern United States. Levine Museum of the New South is an interactive history museum that provides the nation with the most comprehensive interpretation of post-Civil War southern society.





NIGHTLIFE IN THE CITY

Named one of the “Top 50 Cities that Sizzle” by *Nation’s Restaurant News Magazine*, Charlotte offers a wide array of nightlife and cuisine. Step out on the town to enjoy a relaxing meal or into music venues and dance clubs, wine and martini bars, coffeehouses and more. Charlotte’s nightlife scene is exploding with options.

From electric dance floors to mellow jazz clubs, from symphony concertos to fringe comedy theatre, from Broadway entertainment to brew pubs, Charlotte’s social calendar is seemingly endless. For those with a different taste for a night-on-the-town, perhaps it’s center row at the theatre, a cozy corner in a relaxing bistro featuring live music or at one of the city’s many street festivals.



ROARING WITH LAUGHTER

Looking for one-liners, stand-up or sketch comedy? Look no further than Charlotte. Legend to all local funny bones, The Comedy Zone, located in Center City, consistently attracts celebrity comedians such as Jerry Seinfeld and Dave Chappelle. Several fringe comedy theatres offer improvisational sketch comedy, including The Perch.

The Afro-American Cultural Center, an innovative, multidisciplinary epicenter, rejoices in the triumphant spirit of the African-American experience through performing arts programs, visual arts exhibits, arts education camps and workshops and special events preserving the Afro-American history and culture.

ImaginOn: The Joe & Joan Martin Center, encompasses an entire city block, but its size won’t intimidate even the youngest visitor. ImaginOn is an interactive learning environment for young people and their families and a model for partnerships nationwide.

The NC Blumenthal Performing Arts Center is a leader in the state’s cultural scene, offering a wealth of entertaining, performing and visual arts events and exhibits.

Vibrant and robust, the cultural scene of Charlotte offers limitless possibilities as diverse as its people and lifestyles. Charlotte’s culturally-enriched tapestry is a distinction that beckons visitors to return to the city year after year.

REED GOLD MINE IS THE SITE OF THE FIRST DOCUMENTED GOLD FIND IN THE UNITED STATES (1799). TODAY, IT FEATURES EXHIBITS ON GOLD, THE GEOLOGY OF GOLD, MINING TECHNOLOGY, AND EQUIPMENT. NUMEROUS LOCATIONS FEATURE HISTORIC MINING MACHINERY, AND AN AREA ON UPPER HILL HAS THE CHIMNEY AND RESTORED FOUNDATIONS OF THE 1854 MILL HOUSE. (704) 721-GOLD



TRAVEL BACK TO THE 19TH CENTURY AT **LATTA PLANTATION AND NATURE PRESERVE**. ONCE A THRIVING COTTON PLANTATION, LATTA PLANTATION IS NOW A LIVING HISTORY FARM. EXPERIENCE WHAT LIFE WAS LIKE FOR YEOMAN FARMERS AND SLAVES IN THE NORTH CAROLINA BACKCOUNTRY DURING THE 19TH CENTURY. VISIT THE LATTA NATURE PRESERVE FOR AN UNSPOILED LOOK AT THE NATURAL BEAUTY OF THE CAROLINAS. (704) 875-2312

BUILDING CHARLOTTE

Built upon the crossroads of two Native American trading paths it would seem fitting that Charlotte has grown into the second largest financial capital in the country.

Then a small community of Scots-Irish descendents, Charlotte was incorporated in 1768 and named in honor of the wife of King George III, the reigning English monarch. Local citizens also honored Queen Charlotte when they named their new county Mecklenburg after her German homeland. That’s why Charlotte is called the “Queen City.”

The discovery of a 17-pound gold nugget in 1799 began a proliferation of mines and an influx of prospectors here. The boom was short-lived, however, as strike-it-richers and other opportunists followed the call to California a few years later. After gold’s boom and bust, the cotton industry brought prosperity to the region, and with it came the railroads, followed by the interstate highway system and the airport.

Charlotte has experienced a cultural explosion in the last decade. A glimpse at our skyline yields skyscrapers galore courtesy of Corporate America: Bank of America Corporate Center, Hearst Tower, One Wachovia Center, One Bank of America Plaza, and the Interstate Tower to name a few.

The skyline’s newest edition, the EpiCentre, will be built on one of the largest city blocks in Center City Charlotte. This development will alter the face of Center City and further invigorate an already rapidly-growing market in Charlotte. Development includes an exciting new entertainment-retail development along with more than 400 luxury residential units and together will stand as the second-tallest tower in Charlotte.

A new trolley system rolls through the center of town and two professional sports teams, the NFL Carolina Panthers and NBA Charlotte Bobcats, play in venues within the Center City. Today, Charlotte is the largest city between Washington, D.C. and Dallas, TX, and continues to change daily with the additions of new attractions and entertainment options.

VISITOR INFORMATION

Visit Charlotte at Main Street – The Visitor & Relocation Center, located between Tryon and 2nd streets in the Center City, is a one-stop shop for information and merchandise featuring Charlotte and the surrounding areas. Shopping, entertainment, sporting events, maps and brochures, and relocation information – it’s all here. Along with Charlotte themed gifts such as hoodies and t-shirts, regional stoneground grits, cookbooks, skyline posters, locally made jewelry and exclusive crown-stamp pottery, and so much more!



What's HAPPENING in CHARLOTTE

JANUARY

1/3/2006 - 1/8/2006
LITTLE WOMEN - THE MUSICAL

NC Blumenthal Performing Arts Center
(704) 372-1000
www.blumenthalcenter.org

1/14/2006
DR. MARTIN LUTHER KING, JR. HOLIDAY PARADE

Begins at Trade and Graham streets
www.charneck.org



1/31/2006 - 2/5/2006
ANNIE (BROADWAY LIGHTS SERIES / ENCORE ENGAGEMENT)

Ovens Auditorium
(704) 372-1000
www.blumenthalcenter.org

FEBRUARY

2/17/2006- 5/29/2006
DEAD SEA SCROLLS

Discovery Place
(704) 372-6261
www.discoveryplace.org



2/25/2006 - 2/26/2006
SNOW WHITE

NC Blumenthal Performing Arts Center
(704) 372-1000
www.ncdance.org

MARCH

3/1/2006 - 3/5/2006
SOUTHERN SPRING HOME & GARDEN SHOW

Charlotte Merchandise Mart
(704) 333-7709
www.southernshows.com

3/18/2006
ST. PATRICK'S DAY PARADE & FESTIVAL

Tryon Street
(704) 542-6846
www.charlottestpatricksday.com

APRIL

THROUGH 4/19/2006
NBA CHARLOTTE BOBCATS

Charlotte Bobcats Arena
www.bobcatsbasketball.com

4/6/2006 - 4/9/2006
FOOD LION AUTOFAIR

Lowe's Motor Speedway
1-800-455-FANS
www.lowesmotorspeedway.com

4/29/06
QUEEN'S CUP STEEPLCHASE

Brooklandwood
www.queenscup.org

ART & SOUL OF SOUTH END / CHILDREN'S ARTSFEST

Last full weekend in April
www.historicsouthend.com



2/27/2006 - 3/4/2006
CIAA BASKETBALL TOURNAMENT

Charlotte Bobcats Arena
www.ciaatournament.org

MAY

5/1/2006- 5/7/2006
WACHOVIA CHAMPIONSHIP PGA TOURNAMENT

Quail Hollow Club
www.wachoviachampionship.com



5/20/2006
NASCAR NEXTEL ALL-STAR CHALLENGE

Lowe's Motor Speedway
1-800-455-FANS
www.lowesmotorspeedway.com

5/28/2006
COCA-COLA 600 LOWE'S MOTOR SPEEDWAY

1-800-455-FANS
www.lowesmotorspeedway.com

FOOD LION SPEED STREET FESTIVAL

Thu., Fri., Sat. before the Coca-Cola 600 Race
www.600festival.com

CONTINUED ON PAGE 22 >>



CHARLOTTE SHOUT

September - Month-long celebration of art, culture and community, incorporating over 200 performances and events in more than 40 venues throughout the Charlotte region.
www.charlotteshout.com

JUNE

**6/2/2006 - 6/4/2006
TASTE OF CHARLOTTE**

Center City Charlotte
www.tasteofcharlotte.com

SEPTEMBER

**9/9/2006 - 12/31/2006
WOVEN WORLDS**

Mint Museum of
Craft + Design
www.mintmuseum.org

OCTOBER

**ECHL CHARLOTTE
CHECKERS**

Charlotte Bobcats Arena
www.gocheckers.com

IT ALL STARTED WITH A HIT.



6/13/06 - 6/18/06

**CHICAGO (BROADWAY
LIGHTS SERIES)**

NC Blumenthal Performing
Arts Center
(704) 372-1000
www.blumenthalcenter.org

JULY

**7/4/2006
WBT SKYSHOW**

Center City Charlotte
www.skyshow.net

**SOUTHERN
WOMEN'S SHOW**

Charlotte
Merchandise Mart
www.southernshows.com

BANK OF AMERICA 500

Lowe's Motor Speedway
1-800-455-FANS
www.lowesmotorspeedway.com

NOVEMBER

**SOUTHERN
CHRISTMAS SHOW**

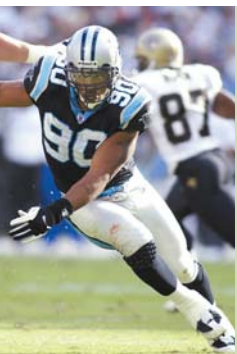
Charlotte
Merchandise Mart
www.southernshows.com

THANKSGIVING DAY

Carolina's Carrousel
Thanksgiving Day
Parade & Festival
North Tryon and
11th streets
www.carrouselparade.org

NFL CAROLINA PANTHERS

Bank of America Stadium
Home games will include
battles with NFC South rivals
and Super Bowl champs
New England Patriots.
(704) 358-7800
www.panthers.com



SCAROWINDS

Friday and Saturday
nights in October and
Halloween night.
Paramount's Scarowinds
offers guests more than
105 action-packed acres.
www.carowinds.com

HOLIDAYS IN THE CITY

Thanksgiving Day through
Christmas Eve
City of Charlotte
www.holidaysinthecity.org

DECEMBER

**MEINEKE
CAR CARE BOWL**

Bank of America Stadium
ACC vs Big East
www.meinekecarcarebowl.com

FOR ADDITIONAL LISTINGS, PLEASE VISIT WWW.VISITCHARLOTTE.COM

Hidden GEMS & HOTSPOTS



ENJOY AND RELAX WITH THE SERENITY OF **WING HAVEN**, A UNIQUE PART OF CHARLOTTE SINCE ITS CREATION IN 1927. THE GARDENS AND BIRD SANCTUARY, ENCLOSED ON ALL SIDES BY BRICK WALLS, ENCOMPASS THREE ACRES IN THE HEART OF A QUIET RESIDENTIAL NEIGHBORHOOD. (704) 331-0664

Ok, so you know about Charlotte's cultural scene and innovative museums, our love for all things NASCAR, sizzling restaurants and nightlife, and the thrills of dips and loops at our amusement park. You've covered the golf courses, the tree-lined neighborhoods filled with boutiques for shopping and maybe even the wineries.

But there's more – a lot more. Hidden throughout our beautiful city there are priceless, literally priceless, gems waiting to be discovered. Here are a few FREE things to do and hotspots to hit while in Charlotte:

Nationally-acclaimed conductor Albert-George Schram leads the Charlotte Symphony Orchestra in its Summer Pops concert series on Sunday evenings during the month of June in Symphony Park adjacent to SouthPark Mall.

Outdoor enthusiasts are sure to find the "perfect spot" among the more than 175 parks operated by the Charlotte-Mecklenburg Parks &

Recreation Department. Enjoy a day of hiking, playing, or championship Frisbee golf. For more information, call (704) 336-3854 or visit www.parkandrec.com.

Visit The Mint Museums, free to the public during select hours every Tuesday. Experience the nation's most comprehensive collection of handcraft revival at the Mint Museum of Craft + Design, located in Center City, or view American paintings, decorative arts and pre-Columbian art in what was once the first branch of the U.S. Mint at the Mint Museum of Art.



Take a tour of Charlotte's public artworks. The Arts & Science Council of Charlotte views public art as integral to a community's fabric by recognizing the potential of art to create livable cities and enrich the spirit and pride of its citizens.

Visit www.artsandscience.org for a printable guide to Center City's public artworks or stop into Visit Charlotte at Main Street at 330 S. Tryon St. for helpful guides and brochures.



Take a walking tour of Charlotte's historic Fourth Ward neighborhood and delight in the architecture of homes dating back to the 1800s and appropriately called the "Grand Old Ladies." Visit www.charlottecentercity.org for a printable guide.

Catch a flick during the warmer months with Center City Partners "Movies on The Green." Cool off in the fish fountains or enjoy refreshments, family fun, and a movie projected outdoors in Center City's novella-themed park, The Green, all under a Carolina sky.



NoDa, Charlotte's fringe art neighborhood, hosts a free Gallery Crawl every 1st and 3rd Friday of the month. Browse the area's swanky galleries, enjoy a bite to eat and relax to smooth music played by local street musicians.



Visit Plaza Midwood, Charlotte's most diverse street-car neighborhood. Its earliest avenues were plotted in 1903 and its newest date from after the Second World War. Buildings range from turn-of-the-century factories and blue collar housing, to one of Charlotte's largest pre-World War II suburban shopping strips, to the city's most prestigious country club and thriving nightspots.

Visit Charlotte's Historic South End neighborhood. With its root in the 1850s, Historic South End has become a nexus for creative expression and has become a vibrant retail and restaurant district.

TAKE A RIDE THROUGH CHARLOTTE'S HISTORY AS YOU BOARD THE **HISTORIC CHARLOTTE TROLLEY LINE**. BEGIN AT ATHERTON MILL IN HISTORIC SOUTH END AND RIDE THROUGH THE HEART OF THE CHARLOTTE CONVENTION CENTER AND NORTH TOWARDS THE CITY'S ENTERTAINMENT DISTRICT. (704) 375-0850

CHARLOTTE
Explore

There's much to discover in one of the Southeast's most beautiful and diverse cities. Visit these destinations in the order listed below for a comprehensive tour of Charlotte's Center City. Or plot your own course and exclude those locations that best suit your interests and the time allowed.

For more information on these and many other attractions, visit [Visit Charlotte at Main Street, 330 South Tryon Street](http://VisitCharlotte.com), call our visitor information line at 704.331.2700 or 1.800.231.4636, or visit our website at www.visitcharlotte.com.

1. **Historic South End** - The heart of the historic district, featuring the historic **Waller Building** and the **Historic South End** neighborhood.
2. **Plaza Midwood** - A vibrant neighborhood with historic architecture and modern amenities.
3. **Uptown Charlotte** - The heart of the city, featuring the **Bank of America** and the **Charlotte Convention Center**.
4. **South End** - A historic neighborhood with a mix of old and new architecture.
5. **East End** - A historic neighborhood with a mix of old and new architecture.
6. **West End** - A historic neighborhood with a mix of old and new architecture.
7. **North End** - A historic neighborhood with a mix of old and new architecture.
8. **South Park** - A historic neighborhood with a mix of old and new architecture.
9. **East Park** - A historic neighborhood with a mix of old and new architecture.
10. **West Park** - A historic neighborhood with a mix of old and new architecture.
11. **North Park** - A historic neighborhood with a mix of old and new architecture.
12. **South Park** - A historic neighborhood with a mix of old and new architecture.
13. **East Park** - A historic neighborhood with a mix of old and new architecture.
14. **West Park** - A historic neighborhood with a mix of old and new architecture.
15. **North Park** - A historic neighborhood with a mix of old and new architecture.
16. **South Park** - A historic neighborhood with a mix of old and new architecture.
17. **East Park** - A historic neighborhood with a mix of old and new architecture.
18. **West Park** - A historic neighborhood with a mix of old and new architecture.
19. **North Park** - A historic neighborhood with a mix of old and new architecture.
20. **South Park** - A historic neighborhood with a mix of old and new architecture.
21. **East Park** - A historic neighborhood with a mix of old and new architecture.
22. **West Park** - A historic neighborhood with a mix of old and new architecture.

a Multi-Cultural CITY



VISIT THE
**AFRO-AMERICAN
CULTURAL CENTER**
(AACC). THROUGH
COMPREHENSIVE
PROGRAMS AND
PRESENTATIONS IN
THE VISUAL ARTS,
PERFORMING ARTS AND
THROUGH INNOVATIVE
EDUCATIONAL
PROGRAMS, THE AACC
PRESERVES, PROMOTES,
AND PRESENTS
AFRICAN-AMERICAN
CULTURE TO THE NATION.
(704) 374-1565

Charlotte embraces and celebrates an ever-changing mosaic of cultures, faiths and races. Individuals from all corners of the globe, metropolitan and remote, rugged and sublime, have chosen to make their home in the Queen City. *Black Enterprise* recently named Charlotte one of the “Top 10 Cities for African-Americans to Live, Work and Play,” and *Ladies Home Journal* chose Charlotte as one of the top 20 cities for women. In 2003, Charlotte was honored to be named the “Most Livable Community for the Visually Impaired” by the American Foundation for the Blind and growing communities of Hispanic and Asian populations have expanded awareness, business, and cultural opportunities within the booming city limits.

While its religious landscape remains overwhelmingly Christian, new religious communities are becoming visible and vital in Charlotte. A large Hindu Temple, four Buddhist, and two Islamic centers are the most obvious witnesses to the influx of new immigrants who attempt to practice their faiths in a city with a major parkway named for Billy Graham.



During the last 20 years, Charlotte, North Carolina’s biggest city, has remade itself from a textile town into an investment banking nexus and international portal; a distinction that continually increases the quality of life for all its citizens.



things to see & do



For those who think Charlotte is only about the starched shirts and ties of the banks that call Charlotte home, or the thrill of NASCAR, walk along the bustling streets of the Center City, step aboard the historic Charlotte Trolley or stroll along the tree-lined streets of our neighborhoods and experience the allure of this truly dynamic city!

Vibrant and robust, Charlotte offers limitless possibilities as diverse as its people and lifestyles. Innovative and captivating – the museums and attractions have made Charlotte a household name. Those seeking adventures off the beaten path have discovered Charlotte's many "unexpected" treasures.

THE NORTH CAROLINA DANCE THEATRE WILL REACH NEW HEIGHTS DURING THE 2005-2006 SEASON WITH ITS ANNUAL PERFORMANCE OF THE *NUTCRACKER* AND A PRODUCTION OF *SNOW WHITE*. DON'T MISS THE DANCE COMPANY THAT PLAYED TO SOLD-OUT AUDIENCES IN NEW YORK. (704) 372-0101

Charlotte's cultural scene attracts nearly 2.9 million visitors annually. From the country's most comprehensive interpretation of post Civil War southern society, to one of the world's best collections of studio craft, to opera, ballet and theatre, there's something for everyone. From museums that will take you back in time to museums for which you will want to return time and time again. An intricate tapestry of cultures is woven throughout Charlotte, blending the distinct heritage of the South as well as preserving and interpreting the remnants of bygone civilizations. Charlotte is a cultural oasis, showcasing all aspects of the performing and visual arts. Theatre offerings range from contemporary pieces to timeless classics. Choices range from Broadway shows and ballet to opera and symphonies, and the city attracts the nation's most impressive collections of fine art.

One ingredient that is critical to a flawless day on the links, on the lake, or in the bleachers is plenty of sunshine. And that's a Charlotte specialty. It's no wonder, that spectator sports as well as those that require active participation, are popular pastimes for residents and visitors alike. Cheer on the NFL Carolina Panthers and NBA Charlotte Bobcats

or find the perfect spot among the over 175 parks operated by the Charlotte-Mecklenburg Parks & Recreation Department. With more than 50 golf courses – ranging from traditional layouts lined with tall pines to challenging designs, including one of the "Top 38 Golf Resorts in the World" at Ballantyne Resort – Charlotte has long been cherished as a slice of golfers paradise.

Appropriately dubbed NASCAR Valley, the Charlotte area is home to Lowe's Motor Speedway, the NASCAR NEXTEL All-Star Challenge, the Coca-Cola 600, Bank of America 500 and within a short drive to 90 percent of all NEXTEL Cup race teams.

From city trolley tours to fall foliage tours, tours of professional sports stadiums and arenas, you are sure to find a tour that will peak your interest. Beautiful botanical gardens, zoos, and other exciting activities await your visit.



BEYOND Center City CHARLOTTE



HISTORIC BRATTONSVILLE, IN NEARBY MCCONNELLS, SC, IS A 775-ACRE LIVING HISTORY VILLAGE THAT INCLUDES A REVOLUTIONARY WAR BATTLEFIELD SITE. THE SITE FEATURES 29 HISTORIC STRUCTURES, WHICH MAY BE TOURED AND ARE ALSO USED DURING LIVING HISTORY PROGRAMS WHERE DOCENTS (COSTUMED-INTERPRETERS) "RELIVE THE PAST" BY DEMONSTRATING A VARIETY OF THEMED DAYS. (803) 684-2327



PLAZA MIDWOOD/DILWORTH

Plaza Midwood and Dilworth neighborhoods offer a taste of Charlotte's specialty boutiques. For those who think Charlotte is only about starched shirts and ties, a drive down Central Avenue to Plaza Midwood opens up plenty of options for urban haute couture clothing, antiques and specialty items. Plaza Midwood, Charlotte's most diverse streetcar-era neighborhood is experiencing a time of renewed interest as young professionals and artists are moving into the "arts & crafts" homes bringing with them new restaurants, galleries, unique retail, and late night entertainment options. Dilworth, one of Charlotte's original suburbs, offers boutiques with upscale clothing, home décor items and furniture for every taste and need. The shops are hidden in old houses and subdued shopping centers, but hold plenty of treasures. Up and down East Boulevard, Dilworth's main street, shoppers can stumble on fun finds. Charlotte's young professional families are drawn to its historic turn of the century architecture and traditional neighborhood feel.

ELIZABETH

The Elizabeth neighborhood is a haven for salons, eateries and pubs. Earning its name from Elizabeth College, a small Lutheran women's college founded in 1897 on the present-day site of Presbyterian Hospital, Elizabeth has become one of the most fashionable residential areas in Charlotte.

MYERS PARK

Myers Park is known by Charlotteans as one of the city's most prestigious and desirable addresses, an area with some of the oldest fine homes, curving drives and streets lined with towering oaks. Queens University, Charlotte's private Presbyterian college is nestled in Myers Park, as a home for the student-centered university that enhances the traditional liberal arts with career preparation. The Myers Park neighborhood is centered around Queens Road and was designed by John Nolen of Boston in 1911. Like all early American suburbs, Myers Park was initially a "streetcar suburb" whose residents commuted to town on the electric trolley car.

SOUTH END

Historic South End, a trolley stop away from Center City Charlotte, couples an assorted mix of restaurants where locals turn for good food and brew in a relaxed atmosphere. South End, the area around South Boulevard below the John Belk Freeway (I 277), stretching beyond East Boulevard was a community of light industry and cotton mills for much of its history. Today its former industrial buildings have been transformed into loft apartments, restaurants and shops. Fine local and regional artists are represented with live music and monthly gallery crawls. The neighborhood is also home to the Art and Soul of South End festival, a yearly celebration of art, music and food.

NODA

NoDa, SoHo's little sister, is Charlotte's historic "arts district" located on and around North Davidson Street, just north of Center City. Formerly an area of textile manufacturing and mill workers' residences, NoDa is home to a funky collection of galleries, performance



venues and amazing cuisine. Old mill buildings have been redeveloped in recent years earning the district a reputation as an eclectic mix of shops, gallery crawls and a great casual atmosphere.

SOUTH PARK

South Park, located in south central Charlotte, is both a residential and commercial neighborhood. The area's name comes from the SouthPark Mall, which is located at the intersection of Sharon and Fairview Roads. The South Park area stretches south as far as Pineville-Matthews Road, with Park Road its western boundary, Providence Road its eastern, and Runnymede its northern boundary. Known to locals as the upscale destination for shopping and dining, South Park features some of the area's most beautiful homes. Leisurely afternoons are filled with thermastone massages and mineral body polishes, decadent desserts and afternoon tea. Galas, for charitable causes, are frequent and a few homes contain impressive, private art collections.

TRAVEL A FEW MILES NORTH TO **THE BOB TIMBERLAKE GALLERY**. FROM FINE ART REPRODUCTIONS TO FINELY CRAFTED FURNITURE INSPIRED BY 18TH CENTURY ARTISANS; DECORATIVE ACCESSORIES, TO HOME FINISHINGS; TO MENSWEAR. EVERYTHING THAT BEARS THE BOB TIMBERLAKE NAME REFLECTS ALL THE COMFORTS OF HOME. (800) 244-0095



BALLANTYNE

Ballantyne makes finding entertainment simple; great dining, shopping and relaxation options are all within close proximity. The Ballantyne community is a planned mixed-use development southeast of Pineville, within a short drive of Charlotte's metropolitan Center City, Charlotte / Douglas International Airport and prestigious SouthPark. The Ballantyne Resort & Spa boasts a five-star golf course named one of the "Top 38 Great Golf Resorts in the World" by *PGA Magazine*, while its award-winning spa has been named by *Condé Nast* as one of the "Top 3 Spas in North America."

CELEBRATE THE STATE'S HERITAGE OF MOTORSPORTS AT THE **NC AUTO RACING HALL OF FAME**. LOCATED IN MOORESVILLE, A.K.A. "RACE CITY USA," THE HALL OF FAME FEATURES VARIOUS EXHIBITS SPANNING ALL FORMS OF MOTORSPORTS PRESENT IN NORTH CAROLINA. (704) 663-5331

BIRKDALE / LAKE NORMAN / MOORESVILLE

Nestled on the banks of 520 beautiful miles of shoreline, Lake Norman, the lake towns of Cornelius, Davidson and Huntersville, NC also offer a wide array of leisure amenities for visitors and guests. Shop at upscale Birkdale Village and enjoy a variety of unique boutiques and bistro-style dining. Take a walk down memory lane at Historic Latta

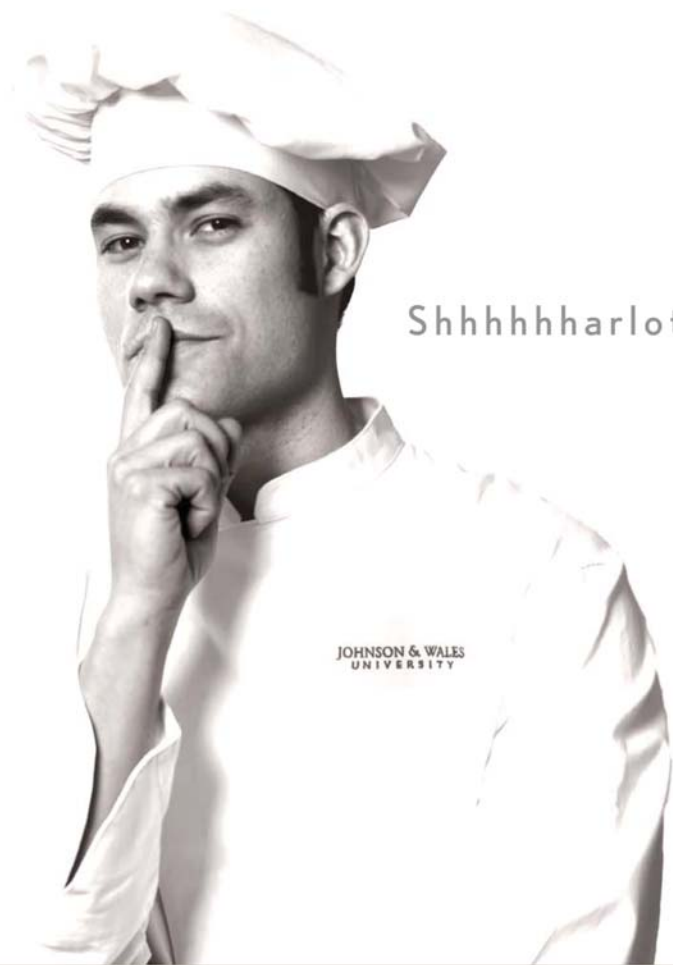


Plantation and the town of Davidson – home of Davidson College. Enjoy playing year-round golf at challenging courses or be amazed at the extensive collection of birds of prey at the Carolina Raptor Center.

UNIVERSITY

If University City were autonomous, it would be one of North Carolina's largest cities, with nearly 200,000 residents. Comprising the northeastern part of Charlotte, the largely suburban University City is the home of the University of North Carolina at Charlotte. University City is also home to University Research Park, a 3,200 acre industrial park. Wachovia Bank operates a large customer support center near the University. The boundaries stretch into eastern Cabarrus County, and on the outer limits lie Lowe's Motor Speedway, Charlotte's home for NASCAR and Concord Mills featuring hundreds of the best names in retail, one of the largest tourist attractions in North Carolina.





Shhhhhharlotte



KEEP IT TO YOURSELF. There's a city not too far away quietly making a name for itself with its hopping nightlife, to-die-for dining, pro sports and acclaimed shopping. But rather than make a big deal out of it here, call 1-800-231-4636 and we'll tell you all the great things about Charlotte personally.



VISITCHARLOTTE.COM

Visit
Charlotte

